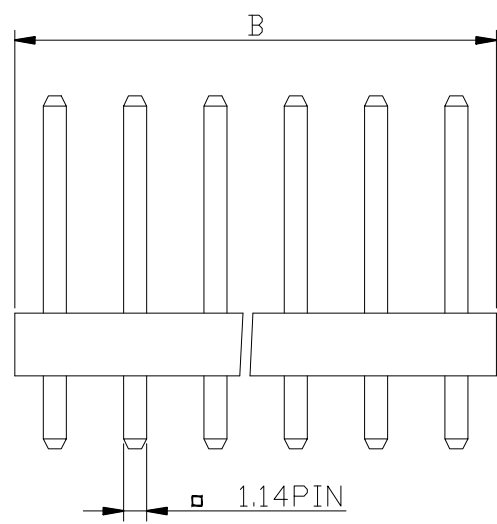
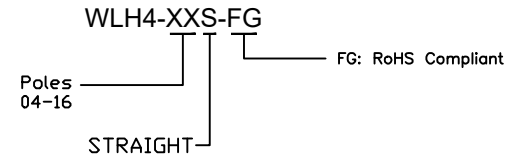
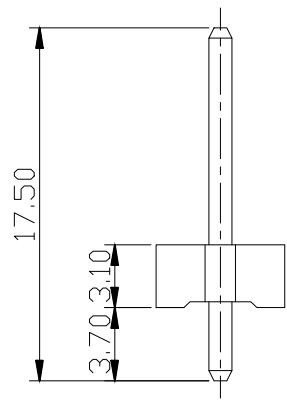


PCB LAYOUT COMPONENT SIDE

SPECIFICATIONS

- Current Rating: 5 Amps
- Voltage Rating: 250 VAC
- Dielectric withstanding: 1500V AC
- Operating Temperature: -25°C to +85°C
- Contact Resistance: 10 m ohms max.
- Insulation Resistance: 1000 Megaohms min.
- Insulator Material: 66, UL 94V-0



Poles	Dimension mm (in.)	
	A	B
02	3.96	8.00
03	7.92	12.00
04	11.88	15.90
05	15.84	20.00
06	19.80	24.00
07	23.76	27.90
08	27.72	31.90
09	31.68	35.80
10	35.64	39.90
11	39.60	43.90
12	43.56	47.70
13	47.52	51.80
14	51.48	55.70
15	55.44	59.70
16	59.40	63.80

APTOS Technology CONFIDENTIAL
 This document, and all information it contains, are the confidential, proprietary property of APTOS Technology. Disclosure, duplication or distribution of this document, or any information it contains, in whole or part, without prior written permission from APTOS Technology is strictly prohibited

GENERAL TOLERANCE UNLESS OTHERWISE SPECIFIED	
XXX. ± X	.XX ± 0.20
XX. ± X	.XXX ± X
X. ± 0.50	X.* ± 5°
.X ± 0.30	.X* ± X°



REV. A	DRAWN	6/15/18	WLH4 Series 3.96mm 180° Locking Wafer Header
DATE 6/15/18	CHECKED		
SCALE As shown	APPROVED		PRODUCT NO. WLH4-XXS-FG
UNIT mm		SIZE A4	FILE NAME: WLH4-XXS-FG.dwg